

ALL INFORMATION INCLUDED BELOW IS CORRECT AS AT THE TIME THAT OUR BROCHURE WENT TO PRESS BUT PLEASE BE AWARE THAT IN THE EVENT THAT A SUBSTITUTION IS MADE, THIS NUTRITIONAL AND ALLERGEN SUMMARY MAY NOT REFLECT THE TRUE CONTENTS OF THE GIFT.

IF YOU HAVE ANY CONCERNS IN RELATION TO ALLERGENS OR ANY OTHER DIETARY REQUIREMENTS, PLEASE CONTACT US PRIOR TO PURCHASE.

VH Code 1010595

## Corkers Sweet Potato, Parsnip, Carrot & Beetroot Vegetable Crisps 125g



Like a basketful of texture and taste harvested from a lovingly-tended garden, with a perfect pinch of natural seasoning. Full-on flavour the Corkers way!

**Ingredients:** Vegetables in variable proportions (parsnip, sweet potato, beetroot, carrot) (64%), Sunflower oil, Sea salt.

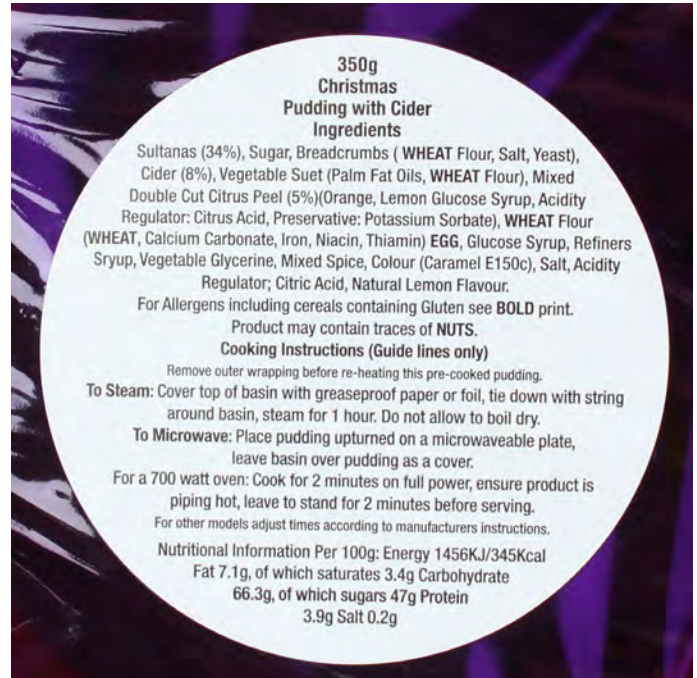
**Store** in a cool dry place away from bright light and strong odours.

### Nutritional information

Typical values	per 100g
Energy	2187kJ/527kcal
Fat	37g
of which saturates	3.9g
Carbohydrate	36g
of which sugars	29g
Fibre	14g
Protein	6.3g
Salt	0.75g

VH Code 1014539

## Gold Crown Christmas Pudding 350g



Popcorn Shed Pop ‘N’ Choc Popcorn 60g



**Unlock the Flavour**

**INGREDIENTS**  
Popped Corn (23%), Sugar, Butter (contains **Milk**), Milk Chocolate (8%) (contains: Sugar, Cocoa Butter, Whole **Milk** powder, Cocoa Mass, Emulsifier: **Soya** Lecithin, Natural Vanilla Flavouring), Glucose Syrup, Golden Syrup, Cocoa Powder (6%), Rapeseed Oil, Sea Salt. Emulsifier: **Soya** Lecithin. Raising Agent: Bicarbonate of Soda.

For allergens please see ingredients in **bold**.

Suitable for Vegetarians.

Store in a cool, dry place. Once opened, re-seal bag to ensure freshness.

**WARNING**  
May contain the occasional unpopped kernel. Made in a facility where **Nuts** and **Peanuts** are present. So delicious it's hard to share!

Best before see base

**FAMILY OWNED**  
**MADE IN BRITAIN**

**NUTRITIONAL INFORMATION**  
*Typical Values per 100g*

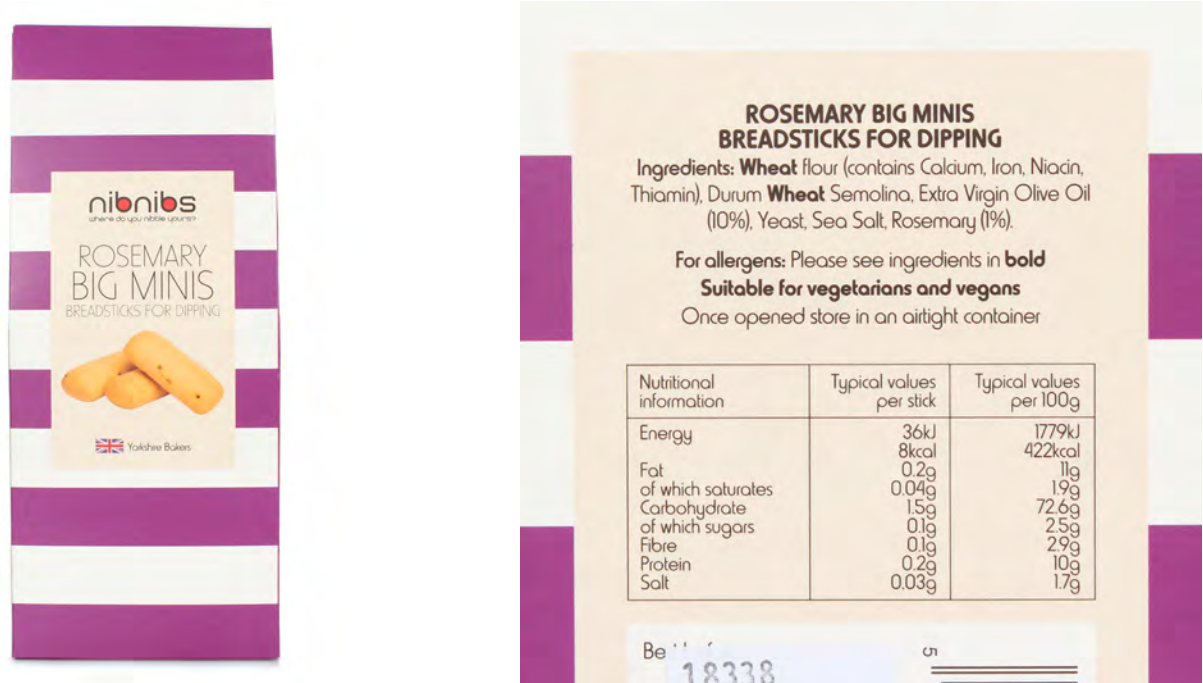
Energy	494kcal/2067KJ
Fat	23.4g
Of which saturates	14.3g
Carbohydrates	63.8g
Of which sugars	40.0g
Protein	5.2g
Salt	0.8g

Established in a shed in Great Britain.

Carve your message into a tree and send to:  
Popcorn Shed Ltd,  
Shedquarters,  
30 City Road, London,  
EC1Y 2AB

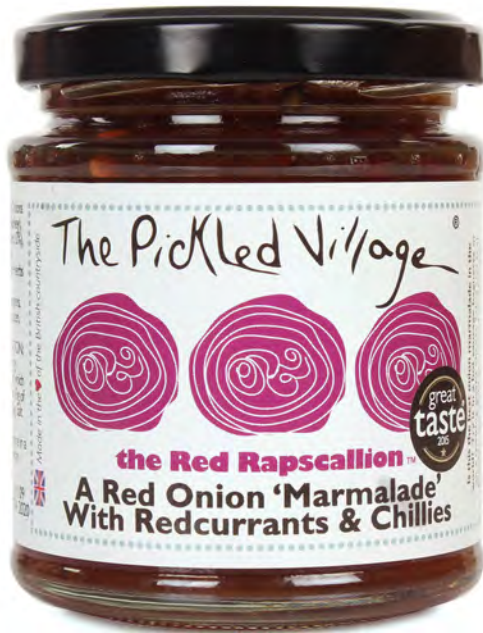
VH Code 1012423

nibnibs Rosemary Big Minis Breadsticks for Dipping 100g





## The Pickled Village The Red Rapscaillon Red Onion Marmalade 227g



VH Code 1014323

## Linden Lady Decorative Chocolate Covered Marshmallows 140g



## Farmhouse Biscuits Regency Triple Chocolate Biscuits 150g



Milk & White Chocolate Chunks	
INGREDIENTS: Flour ( <b>Wheat</b> Flour, Calcium, Iron, Niacin, Thiamin), Vegetable Oils (Palm, Rapeseed, Salt, Emulsifier: E475, Flavouring, Colours: (Annatto, Curcumin)), Sugar, Brown Sugar (Sugar, Cane Molasses), Dark Chocolate Chunks (5 %) (Sugar, Cocoa Mass, Cocoa Butter, Emulsifier: <b>Soya</b> Lecithin, Natural Vanilla Flavouring), <b>Milk</b> Chocolate Chunks (5 %) (Sugar, Whole <b>Milk</b> Powder, Cocoa Butter, Cocoa Mass, Whey Powder ( <b>Milk</b> ), Skimmed <b>Milk</b> Powder, Emulsifier: <b>Soya</b> Lecithin, Natural Vanilla Flavouring), White Chocolate Chunks (5 %) (Sugar, Whole <b>Milk</b> Powder, Cocoa Butter, Skimmed <b>Milk</b> Powder, Emulsifier: <b>Soya</b> Lecithin, Natural Vanilla Flavouring), Pasteurised <b>Eggs</b> , Raising Agents: (Sodium Bicarbonate, Diphosphate, <b>Wheat</b> Flour).	
ALLERGEN ADVICE: For allergens, including cereals containing gluten, see ingredients in <b>Bold</b> Manufactured in an Environment which handles Tree Nuts Suitable for Vegetarians	
STORAGE: Store in a cool, dry place Once opened store in an airtight container and consume within 2 weeks Best Before End: See base of pack.	
Nutritional Information:	
Typical Values	Per 100g
Energy	2202kJ / 527kcal
Fat	28.5g
of which Saturates	10.9g
Carbohydrate	63.3g
of which Sugars	26.1g
Protein	6.40g
Salt	0.90g



VH Code 1011207

## Claire's Handmade Blackcurrant Extra Jam 227g



## The Dormen Salted Caramel & Chocolate Raisin Mix 100g



### INGREDIENTS:

Salted **Peanuts** 40% (**Peanuts**, Rapeseed Oil, Salt), Caramelised **Peanuts** 40% (**Peanuts**, Sugar, Glucose, Sunflower Oil, Emulsifier: Gum Arabic, Honey), **Milk Chocolate Raisins** 20%, Raisins [Raisins, Palm Oil, Preservative: Sulphur Dioxide], **Milk Chocolate** [Sugar, Cocoa Butter, **Whole Milk Powder**, Cocoa Mass, Emulsifier: **Soya Lecithin**; Natural Vanilla Flavour], Modified Tapioca Starch, Glucose Syrup (**Wheat**), Coconut Oil, Glazing Agent: Shellac; Emulsifier: Mono- And Di-glycerides Of Fatty Acids; Acidity Regulator: Citric Acid; Preservative: Sorbic Acid.

### Allergen Information:

For allergens, please see ingredients in **bold**. May also contain Other Nuts, Egg, Mustard, Sesame Seeds.

Store in a cool, dry place away from strong odours and light. Once opened consume within 5 days if kept in an air tight container.

raisins. Utterly divine."

### NUTRITION INFORMATION:

VALUES	PER 100g
ENERGY	2198kJ 528Kcal
FAT	35g
Of which SATURATES	8.3g
CARBOHYDRATE	35g
Of which SUGARS	30.4g
FIBRE	9g
PROTEIN	15g
SALT	0.3g

VH Code 008707

Lily O'Briens Ultimate Chocolate Collection 93g



**Ingredients:**  
Milk Chocolate [Sugar, Whole **Milk** Powder, Cocoa Butter, Cocoa Mass, Emulsifier (**Soya** Lecithin), Natural Vanilla Flavouring], Dark Chocolate [Cocoa Mass, Sugar, Cocoa Butter, Emulsifier (**Soya** Lecithin), Natural Vanilla Flavouring], White Chocolate [Sugar, Cocoa Butter, Whole **Milk** Powder, Emulsifier (**Soya** Lecithin), Natural Vanilla Flavouring], Glucose Syrup, Caramel Filling [Milk Chocolate (Whole **Milk** Powder, Cocoa Powder, Caramelised Sugar, Cocoa Mass, Sugar, Natural Caramel Flavouring), Sugar, Vegetable Oil (Sunflower), Biscuit Pieces (**Wheat** Flour, Sugar, **Wheat** Malt Flour, **Wheat** Starch, Raising Agent (Sodium Bicarbonate), Salt, Natural Vanilla Flavouring), Skimmed **Milk** Powder, Emulsifier (**Soya** Lecithin), Spices], Sticky Toffee Caramel [Sugar, Glucose Syrup, Coconut Oil, Water, Sweetened Condensed Milk (**Milk**, Sugar), Butter (**Milk**), Cocoa Butter, Cocoa Mass, Natural Flavouring, Salt, Whey Powder (**Milk**)], Milk Chocolate Filling [Vegetable Oil (Palm), Whole **Milk** Powder, Cocoa Butter, **Milk** Fat, Emulsifier (**Soya** Lecithin), Natural Vanilla Flavouring], Lemon Filling [Glucose Syrup, Sugar, Sweetened Condensed Skimmed Milk (**Milk**, Sugar), Water, Rapeseed Oil, Stabiliser (Sorbitol), Modified Starch (Maize), Lemon Concentrate, Acidity Regulator (Citric Acid), Natural Lemon Flavouring, Emulsifier (Mono & Diglycerides of Fatty Acids) Colour (Beta Carotene)], White Chocolate Filling [Vegetable Oil (Palm), Sugar, Whole **Milk** Powder, Cocoa Butter, **Milk** Fat, Emulsifier (**Soya** Lecithin), Natural Vanilla Flavouring], Butterfat Blend [Vegetable Oil (Palm & Rapeseed), Sugar, Glucose Syrup, Water, **Milk** Fat, Emulsifier (Mono & Diglycerides of Fatty Acids, Natural Flavouring)], Sugar, **Hazelnuts**, Water, Invert Sugar Syrup, Freeze Dried Orange Pieces, Vegetable Oil (Rapeseed), White Meringue Pieces [Sugar, **Wheat** Starch, **Egg** Albumen, Vegetable Fat (Shea, Palm & **Soya** Beans)], Natural Flavouring, Emulsifier (**Soya** Lecithin).

**Allergy Advice:** For Allergens, including Cereals containing Gluten, please see ingredients listed in **BOLD**

**This product does not contain any artificial colours or flavours.**  
**This product is suitable for vegetarians.**

Milk Chocolate contains Cocoa Solids 30% minimum, Milk Solids, 20% minimum. Dark Chocolate contains Cocoa Solids 55% minimum.

**For maximum taste and enjoyment, please store your Lily O'Brien's chocolates in a cool dry place 15-18°C away from moisture, strong sunlight and odours.**

Visit our website: [www.lilyobriens.com](http://www.lilyobriens.com)  
Lily O'Brien's, Green Road,  
Newbridge, Co. Kildare, Ireland.  
**Product of Ireland**

**Best Before End: 31 MAY 20**  
**Batch No: L19137**

93g 3.2oz e

Nutrition Information		
Nutrition Information Typical Values	Per 100g	Per serving (38g - Approx. 3 chocolates)
Energy	2202kJ/ 526kcal	837kJ/ 200kcal
Fat	31.5g	12.0g
of which saturates	18.4g	7.0g
Carbohydrate	57.8g	22.0g
of which sugars	50.0g	19.0g
Protein	5.2g	2.0g
Salt	0.15g	0.06g



VH Code 004254

## Barfield Bakery Mince Pies x 4



### BARFIELD BAKERY



#### *Luxury Hand Made Brandy Mince Pie*

**4 brandy mince pies with fluted edges and dusted with white sugar**

Ingredients: mincemeat (dried vine fruit, sugar, apple, glucose syrup, water, vegetable suet, mixed peel, modified maize starch, brandy 40% abv, acetic acid, mixed spice, malt extract, flavouring, orange oil), **wheat** flour, (**wheat** flour, calcium carbonate, iron, niacin, thiamine) maize flour, margarine (vegetable oils (palm, rapeseed), water, salt, natural flavour), sugar, lard, **egg**

**ALLERGY ADVICE: FOR ALLERGENS, SEE INGREDIENTS IN BOLD.**

#### NUTRITION INFORMATION

Typical Values	Per 100g	Per Tart
ENERGY	1429kJ 341kcal	800kJ 191kcal
PROTEIN	3.8g	2.1g
CARBOHYDRATE	47.5g	26.6g
of which sugars	27.9g	15.6g
FAT	15.2g	8.5g
of which saturates	4.3g	2.4g
FIBRE	1.8g	1.0g
SODIUM	Trace	Trace
SALT	Trace	Trace

**Storage:**  
Store in a cool dry place.  
Once opened store  
in an airtight container.

**FOR BEST BEFORE  
SEE SIDE OF PACK**

If you are not entirely satisfied with this product, please  
contact Customer Services at: Barfield Bakery,  
Boundary House, Little Down Business Park, Little Down,  
Shaftesbury, Dorset. SP7 9BT  
[www.barfieldbakery.co.uk](http://www.barfieldbakery.co.uk)



VH Code 1014717

## CHOC + 100% Chocolate Drinking Chocolate 140g

